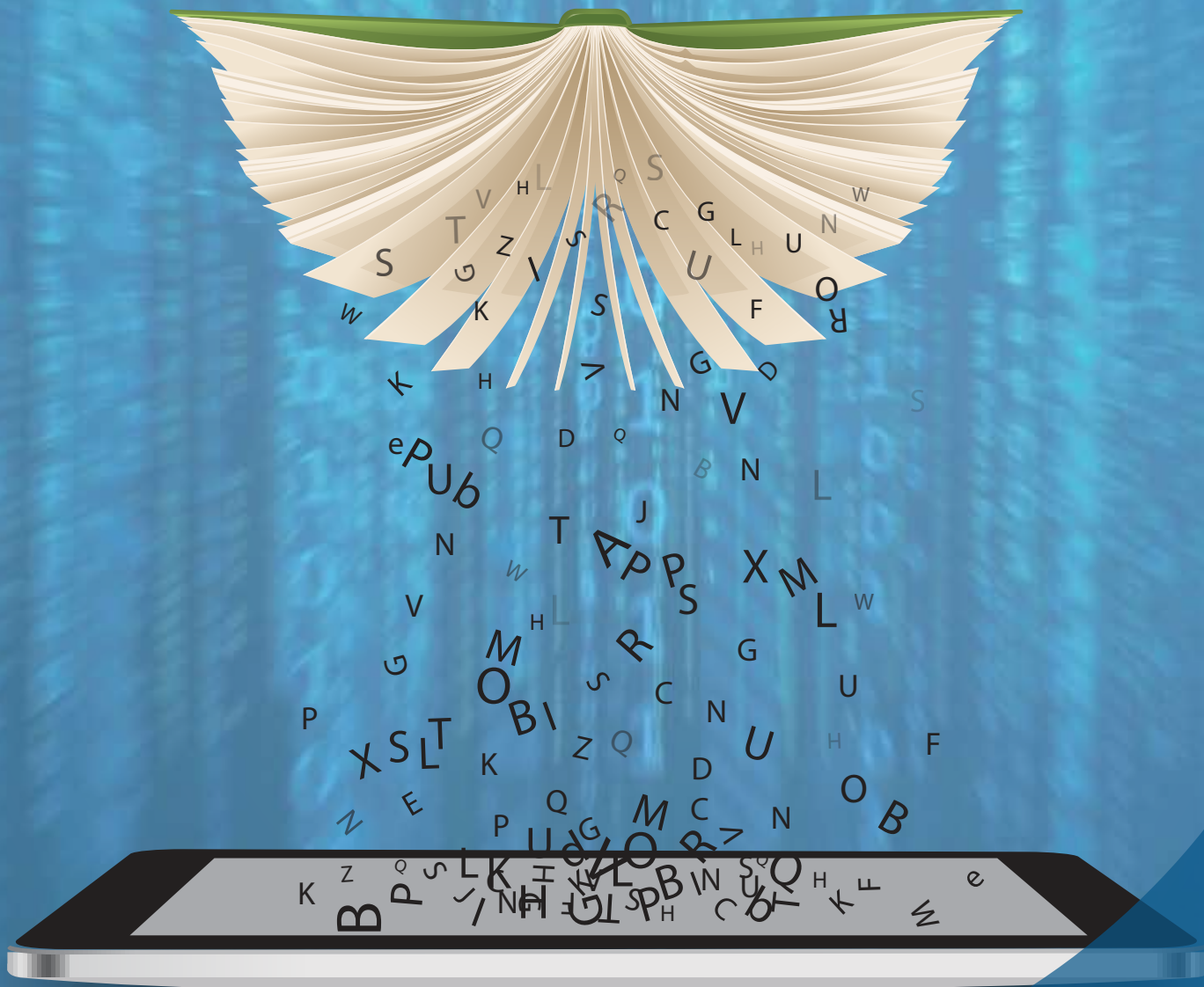


Derive value from your legacy content



Make content accessible, discoverable and reusable

Conversion Services

- Data Capture (Scanning, OCR)
- Markup - XML, HTML, Proprietary ML
- 99.5 to 99.995% accuracy level

www.luminadatamatics.com

Converting Legislative Databases into More Easily Accessible Formats

The business requisite was to convert WordPerfect documents into normal text documents by applying XML coding and to validate documents using Cascading Style Sheets (CSS).

Challenges

- Over 90 MB of legislative data had to be converted conforming to various DTDs—ACT.DTD, SUBORDLEG.DTD, LEGHISTORY.DTD, and INDEX.DTD
- The input documents (in WordPerfect 5.1 format) had to be converted into SGML files in accordance with the XML-compliant DTD
- The data included tables of varying complexity, graphics, equations, and forms
- The database contained a number of acts and statutory instruments formatted in the client's old typographic style

Solution and Approach

- Deployment of dual shore delivery model
- Employment of a dedicated team well-versed in understanding DTD and client requisites
- Indigenous development of a PERL script to convert RTF codes into SGML tags
- The successful delivery of XML conversion with an output of 10 MB every month

Key Benefits

The client found a cost-effective method of handling a large volume of data without hiring or training staff or compromising on the quality of the final output. The process also helped the client provide access to its target audience to accurate information, despite the specifications undergoing numerous modifications.



marketing@luminad.com
www.luminadatamatics.com

North America
Europe
Asia

: Norwell, MA
: Munich
: Bengaluru, Chennai, Mumbai, Noida, Puducherry